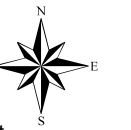


Potential Sites

- Potential Basins
- Catchments
- GI Catchments

Incline Village Green Infrastructure Project

Scale - 1:1000



NV West State Plane

NAD 83

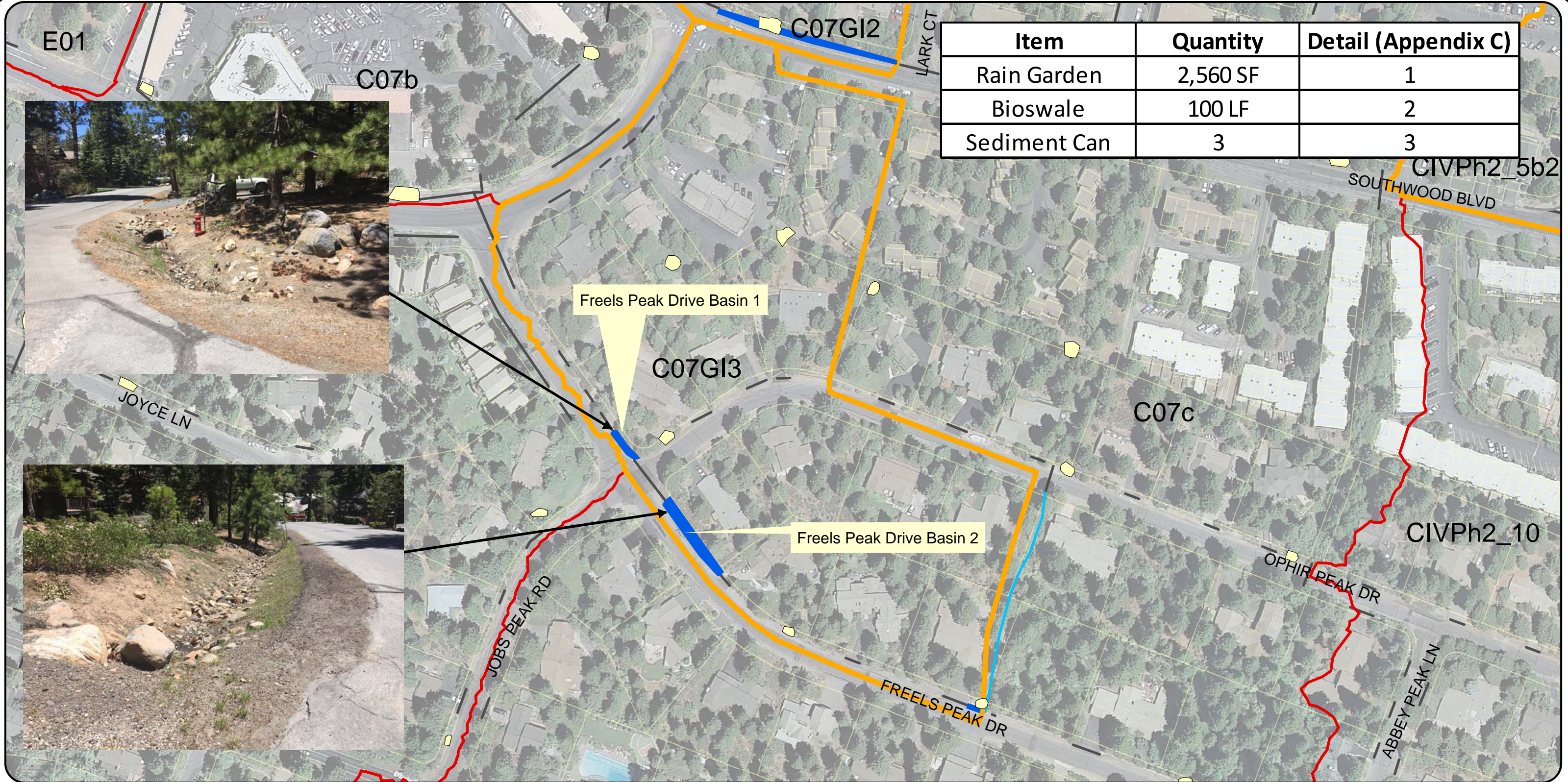
horiz. units: feet

Prepared by NTCD



May 2017

Vicinity Map

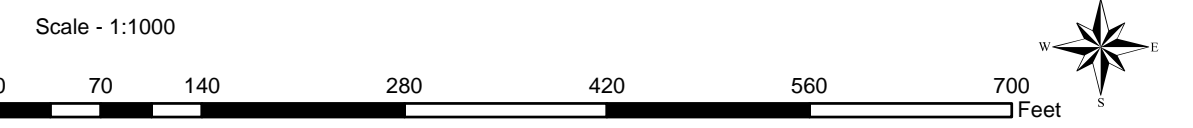


Item	Quantity	Detail (Appendix C)
Rain Garden	2,560 SF	1
Bioswale	100 LF	2
Sediment Can	3	3

Potential Sites: Freels Peak Drive

- Schladow Depression Areas
- PLRM Basins
- Potential Basins
- Catchments
- GI Catchments
- FlowPath
- CurbGutter
- ConveyancePipe
- TRPA Parcels

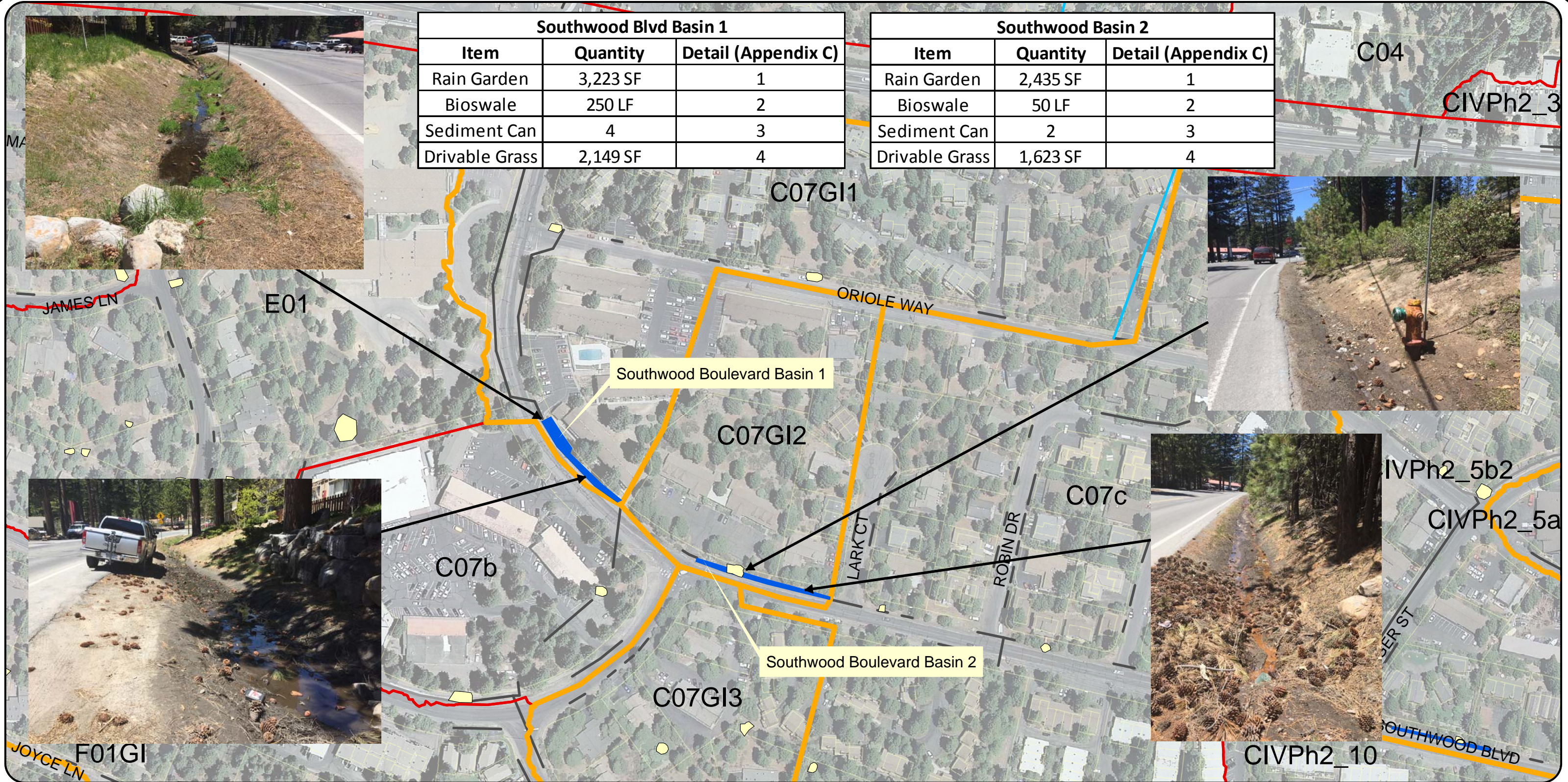
Incline Village Green Infrastructure Project



NV West State Plane	NAD 83	horiz. units: feet
Prepared by NTCD		May 2017

Southwood Blvd Basin 1		
Item	Quantity	Detail (Appendix C)
Rain Garden	3,223 SF	1
Bioswale	250 LF	2
Sediment Can	4	3
Drivable Grass	2,149 SF	4

Southwood Basin 2		
Item	Quantity	Detail (Appendix C)
Rain Garden	2,435 SF	1
Bioswale	50 LF	2
Sediment Can	2	3
Drivable Grass	1,623 SF	4



Potential Sites: Southwood Boulevard 1

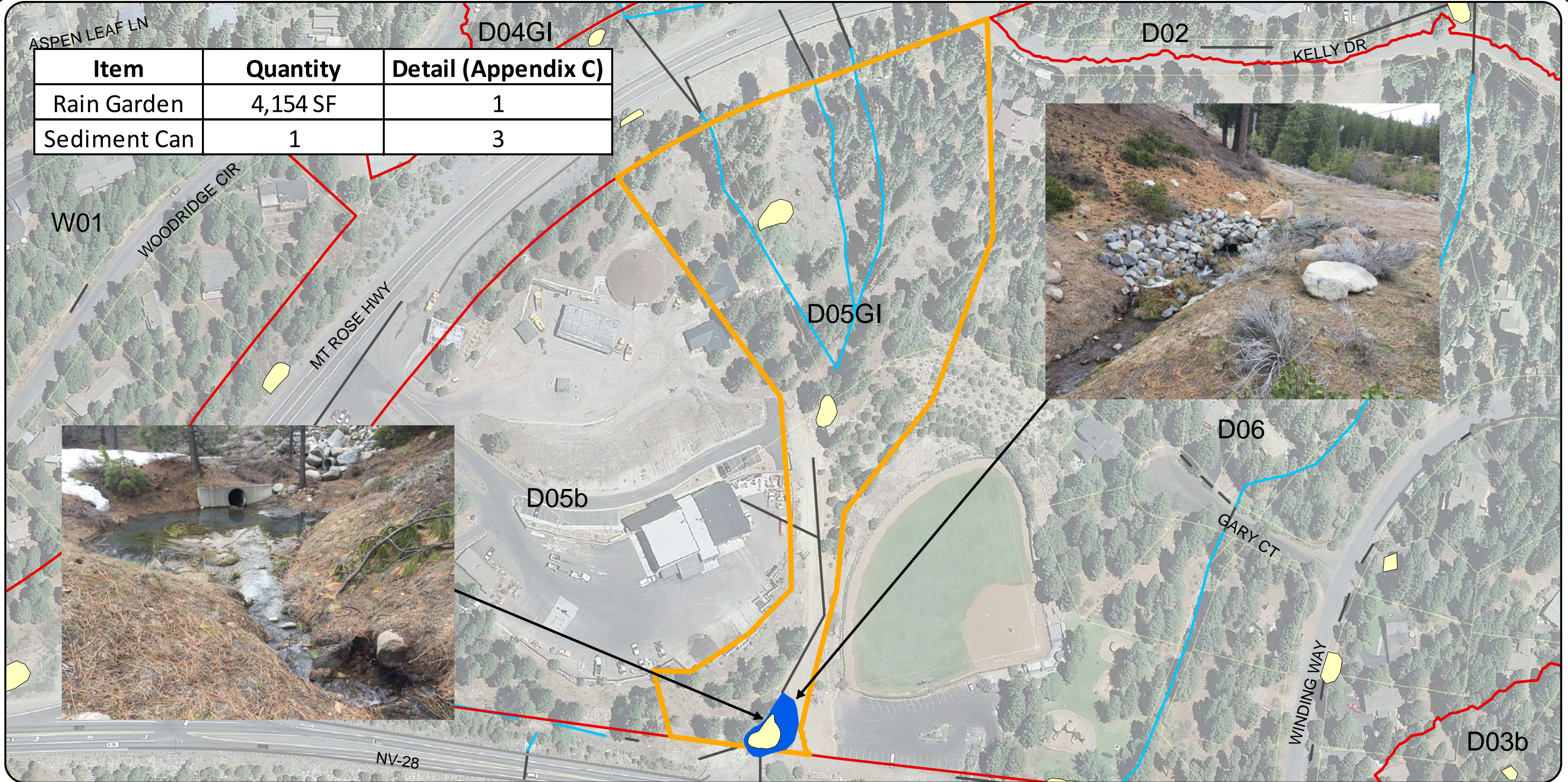
- Schladow Depression Areas
- PLRM Basins
- Potential Basins
- Catchments
- GI Catchments
- FlowPath
- CurbGutter
- ConveyancePipe
- TRPA Parcels

Incline Village Green Infrastructure Project



NV West State Plane	NAD 83	horiz. units: feet
Prepared by NTCD		May 2017
		2 & 6

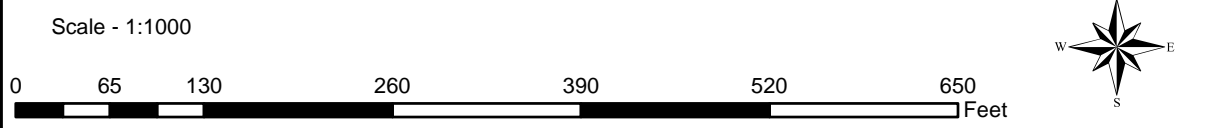
Item	Quantity	Detail (Appendix C)
Rain Garden	4,154 SF	1
Sediment Can	1	3



Potential Sites: Preston Field

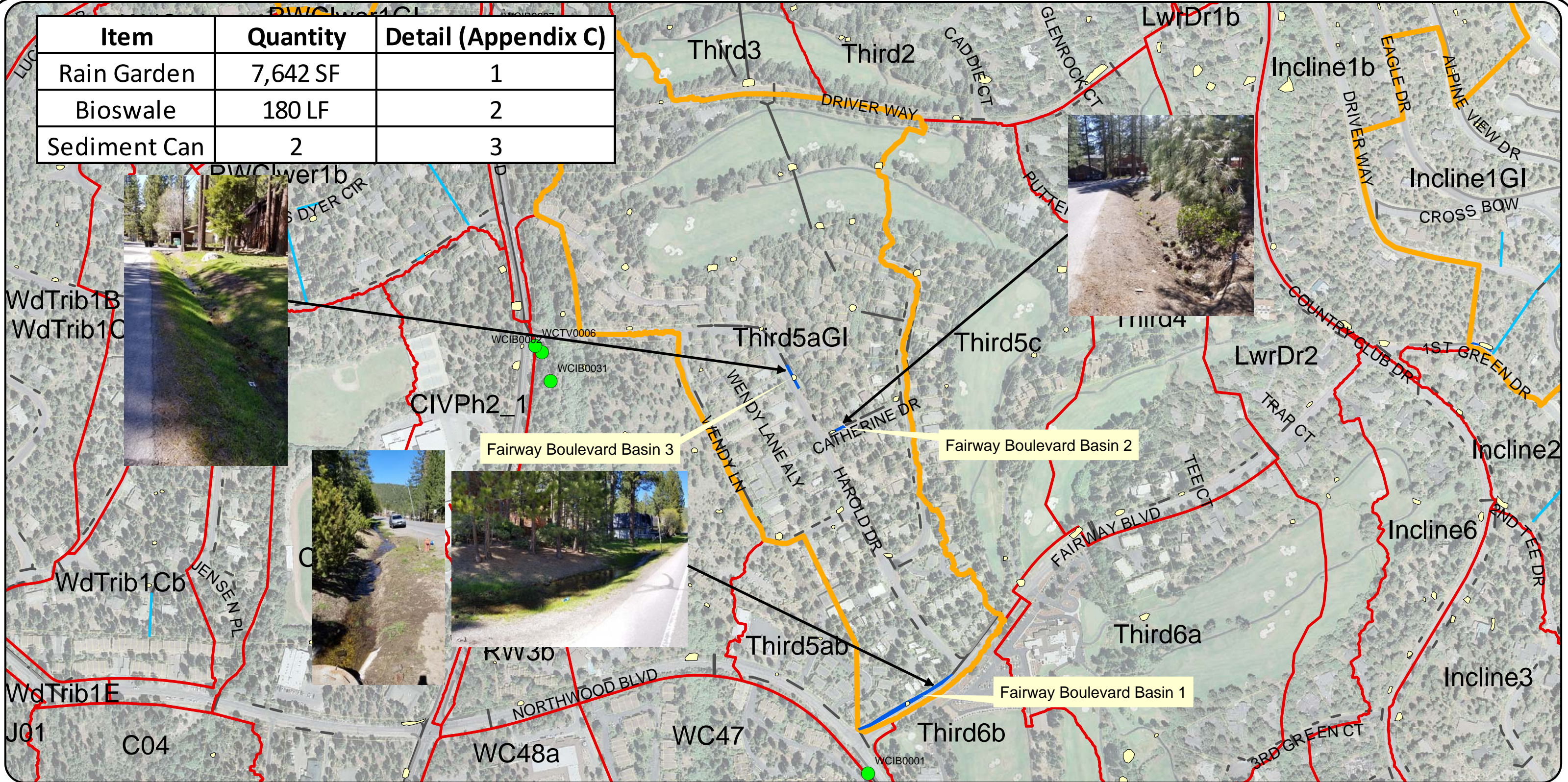
- Schladow Depression Areas
- PLRM Basins
- Potential Basins
- Catchments
- GI Catchments
- FlowPath
- CurbGutter
- ConveyancePipe
- TRPA Parcels

Incline Village Green Infrastructure Project



NV West State Plane	NAD 83	horiz. units: feet
Prepared by NTCD		May 2017

Item	Quantity	Detail (Appendix C)
Rain Garden	7,642 SF	1
Bioswale	180 LF	2
Sediment Can	2	3



Potential Sites: Fairway Boulevard

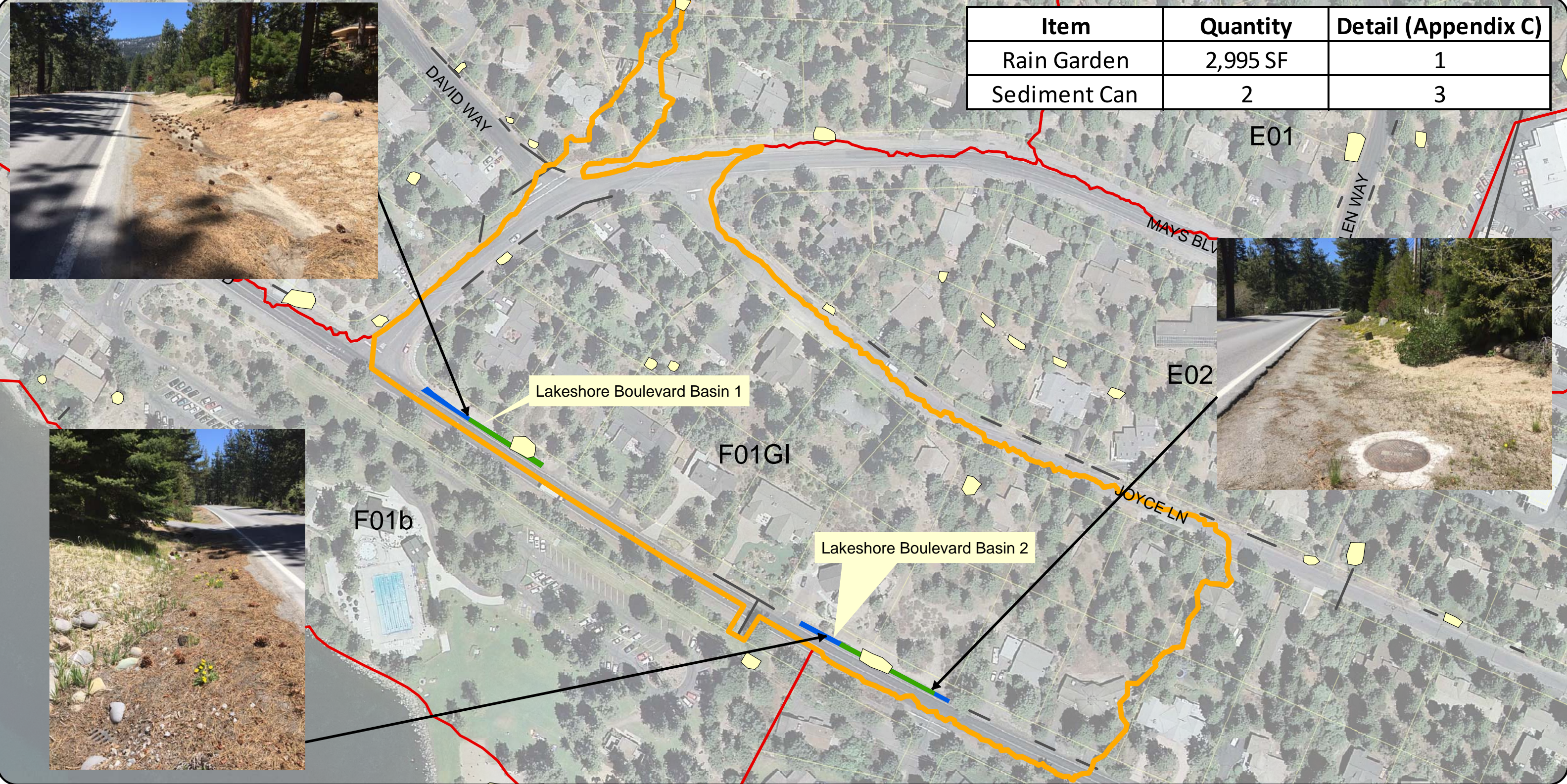
- FF3 RWC Stormwater Treatment
- Schladow Depression Areas
- PLRM Basins
- Potential Basins
- Catchments
- GI Catchments
- TRPA Parcels
- FlowPath
- ConveyancePipe
- CurbGutter

Incline Village Green Infrastructure Project



NV West State Plane	NAD 83	horiz. units: feet
Prepared by NTCD		May 2017

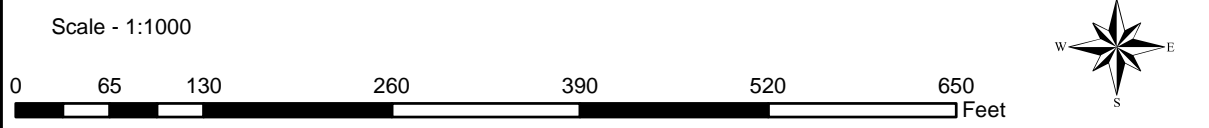
Item	Quantity	Detail (Appendix C)
Rain Garden	2,995 SF	1
Sediment Can	2	3



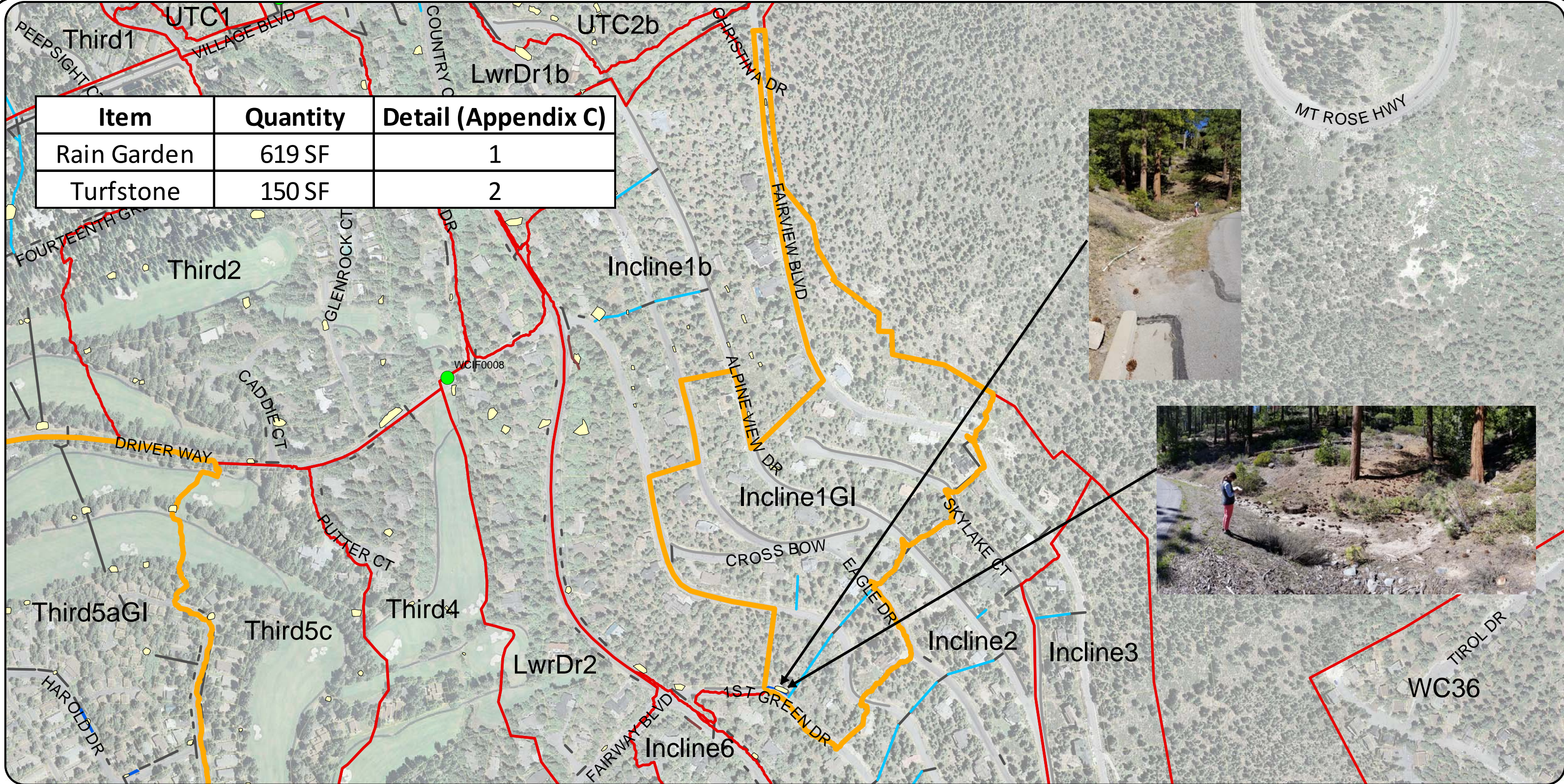
Potential Sites: Lakeshore Boulevard

- Schladow Depression Areas
- PLRM Basins
- Potential Basins
- Catchments
- GI Catchments
- FlowPath
- CurbGutter
- ConveyancePipe
- TRPA Parcels

Incline Village Green Infrastructure Project



NV West State Plane	NAD 83	horiz. units: feet
Prepared by NTCD		May 2017



Item	Quantity	Detail (Appendix C)
Rain Garden	619 SF	1
Turfstone	150 SF	2

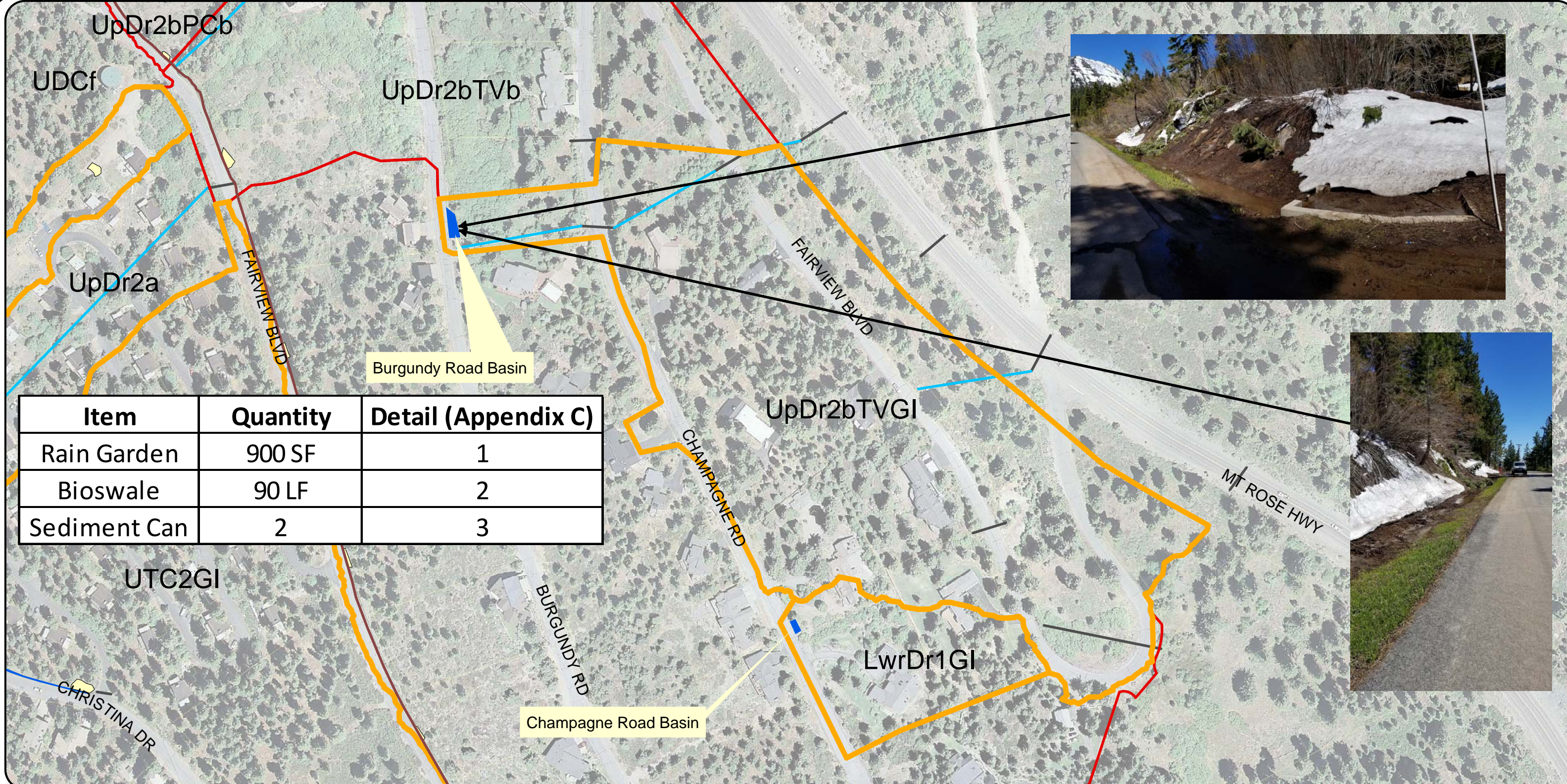
Potential Sites: 1st Green Drive

- FF3 UDC Stormwater Treatment
- Schladow Depression Areas
- PLRM Basins
- Potential Basins
- Catchments
- GI Catchments
- TRPA Parcels
- FlowPath
- CurbGutter
- ConveyancePipe
- TRPA Parcels

Incline Village Green Infrastructure Project



NV West State Plane	NAD 83	horiz. units: feet
Prepared by NTCD		May 2017

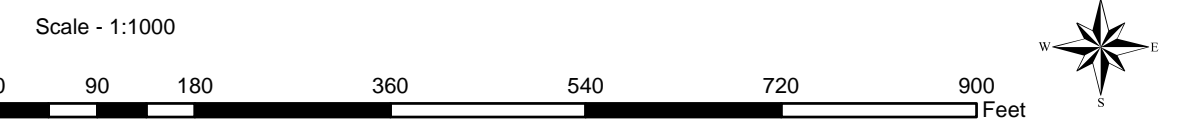


Item	Quantity	Detail (Appendix C)
Rain Garden	900 SF	1
Bioswale	90 LF	2
Sediment Can	2	3

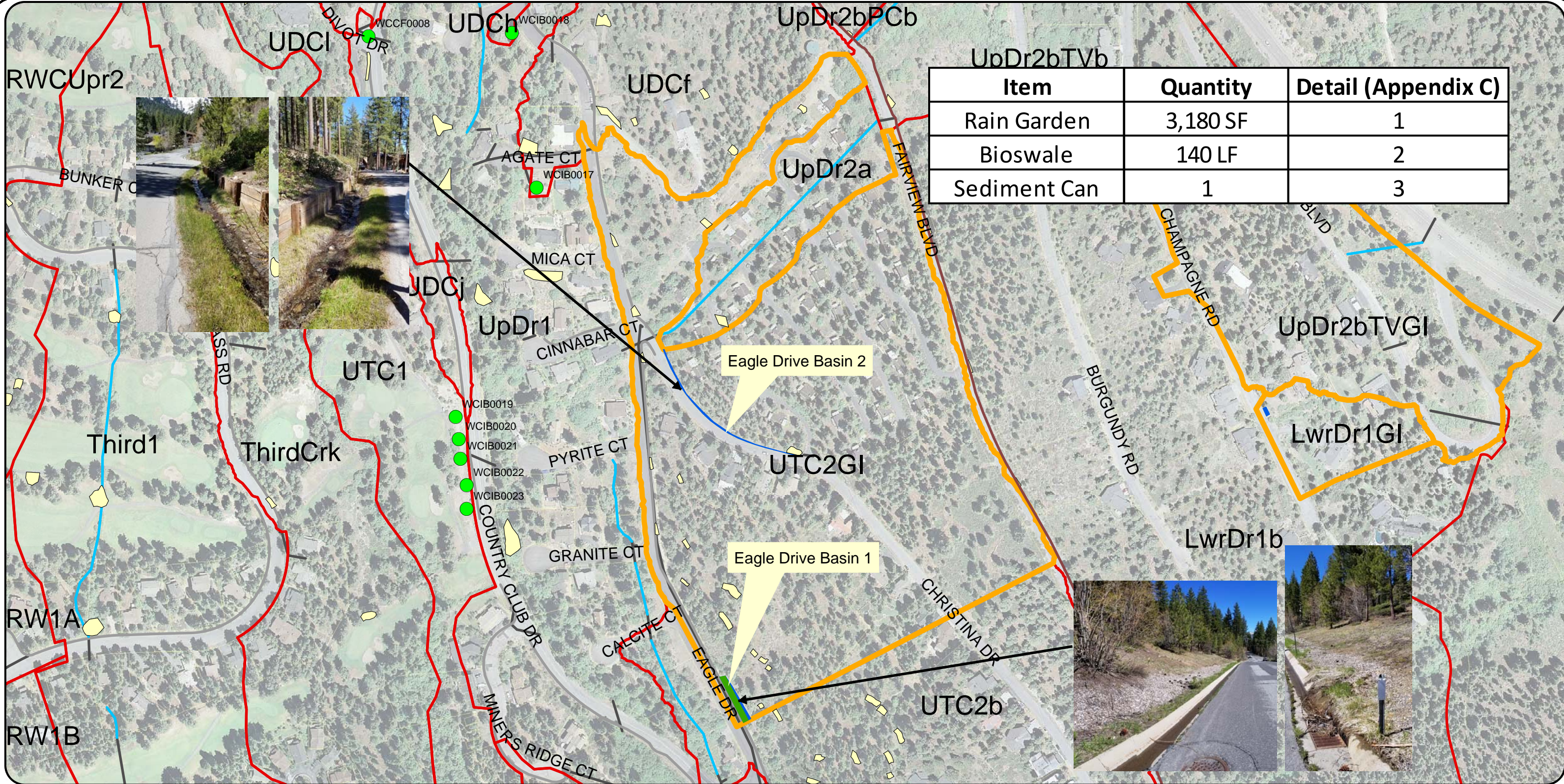
Potential Sites: Burgundy Road

- Schladow Depression Areas
- PLRM Basins
- Potential Basins
- Catchments
- GI Catchments
- FlowPath
- CurbGutter
- ConveyancePipe
- TRPA Parcels

Incline Village Green Infrastructure Project



NV West State Plane	NAD 83	horiz. units: feet
Prepared by NTCD		May 2017

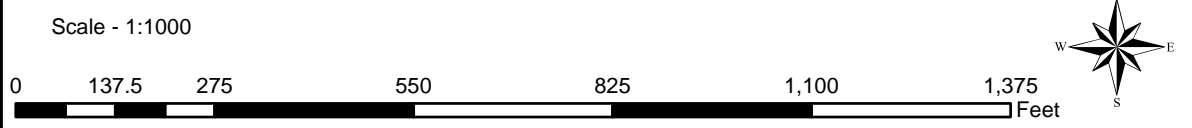


Item	Quantity	Detail (Appendix C)
Rain Garden	3,180 SF	1
Bioswale	140 LF	2
Sediment Can	1	3

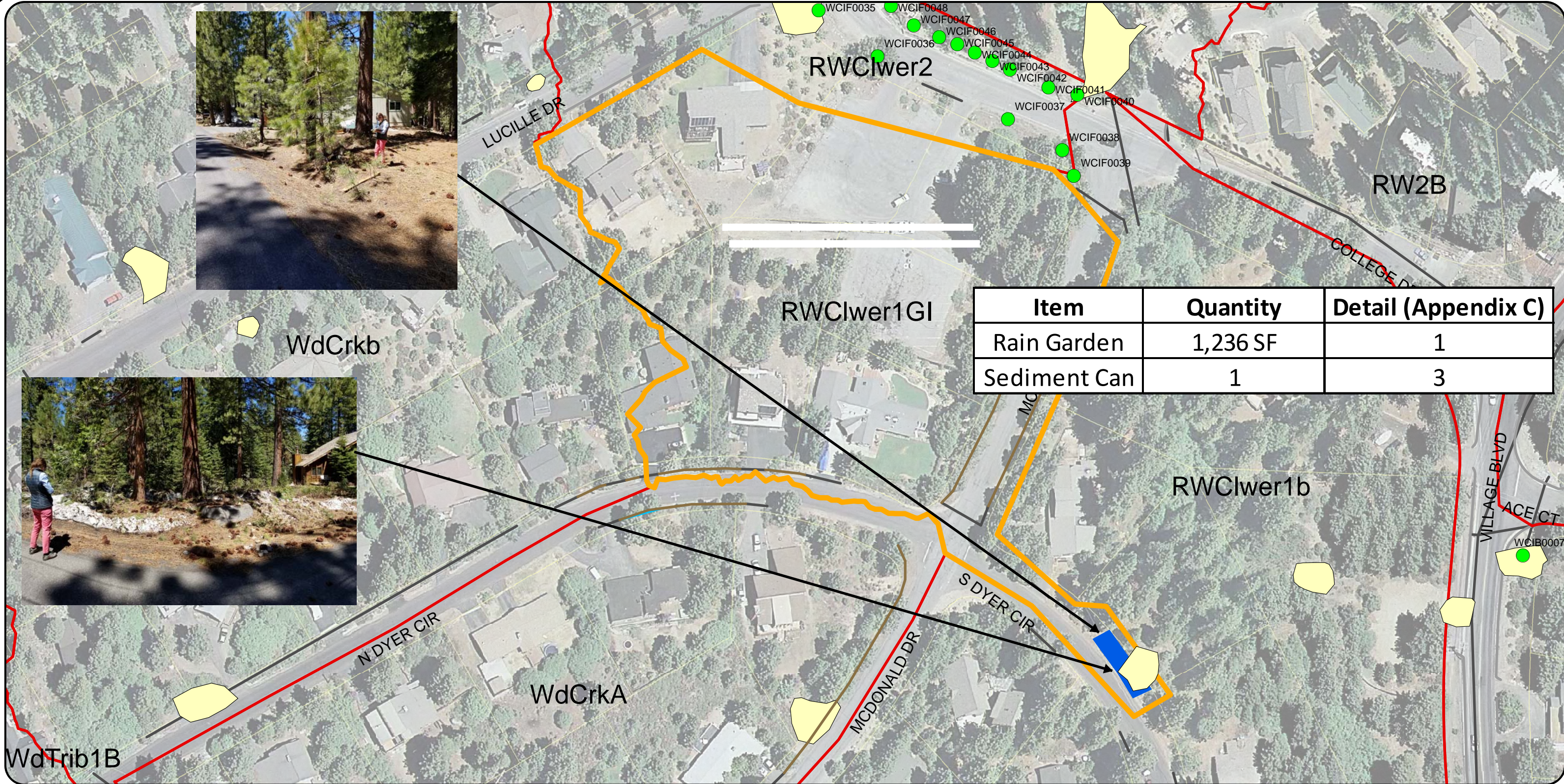
Potential Sites: Eagle Drive

- FF3 UDC Stormwater Treatment
- Schladow Depression Areas
- PLRM Basins
- Potential Basins
- Catchments
- GI Catchments
- TRPA Parcels
- FlowPath
- CurbGutter
- ConveyancePipe
- TRPA Parcels

Incline Village Green Infrastructure Project



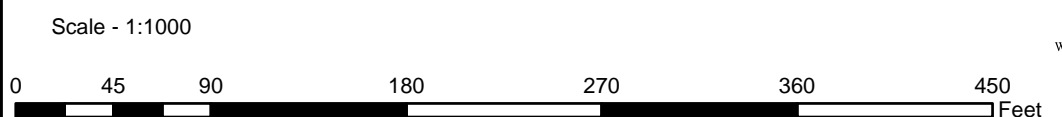
NV West State Plane	NAD 83	horiz. units: feet
Prepared by NTCD		May 2017



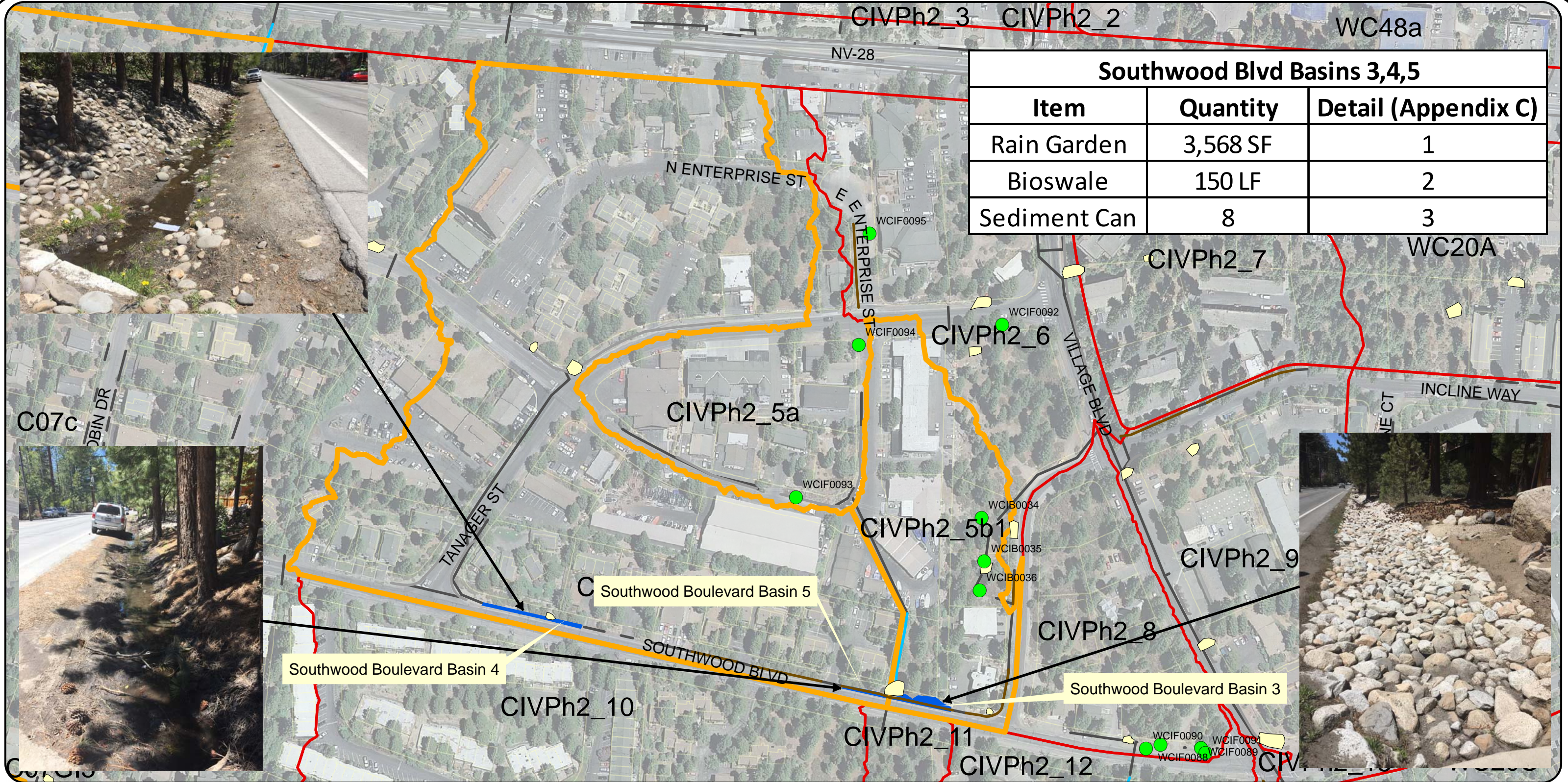
Potential Sites: South Dyer Circle

- CIVPh1 Stormwater Treatment
- Catchments
- Conveyance Pipe
- Schladow Depression Areas
- GI Catchments
- TRPA Parcels
- PLRM Basins
- Flow Path
- Curb Gutter
- Potential Basins

Incline Village Green Infrastructure Project



NV West State Plane	NAD 83	horiz. units: feet
Prepared by NTCD		May 2017

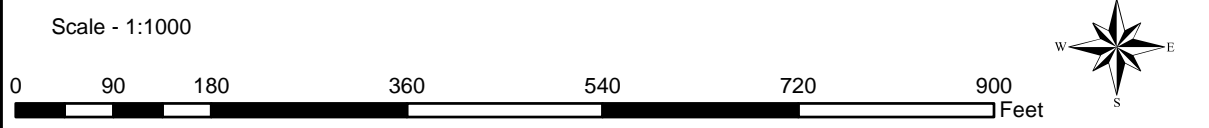


Southwood Blvd Basins 3,4,5		
Item	Quantity	Detail (Appendix C)
Rain Garden	3,568 SF	1
Bioswale	150 LF	2
Sediment Can	8	3

Potential Sites: Southwood Boulevard 2

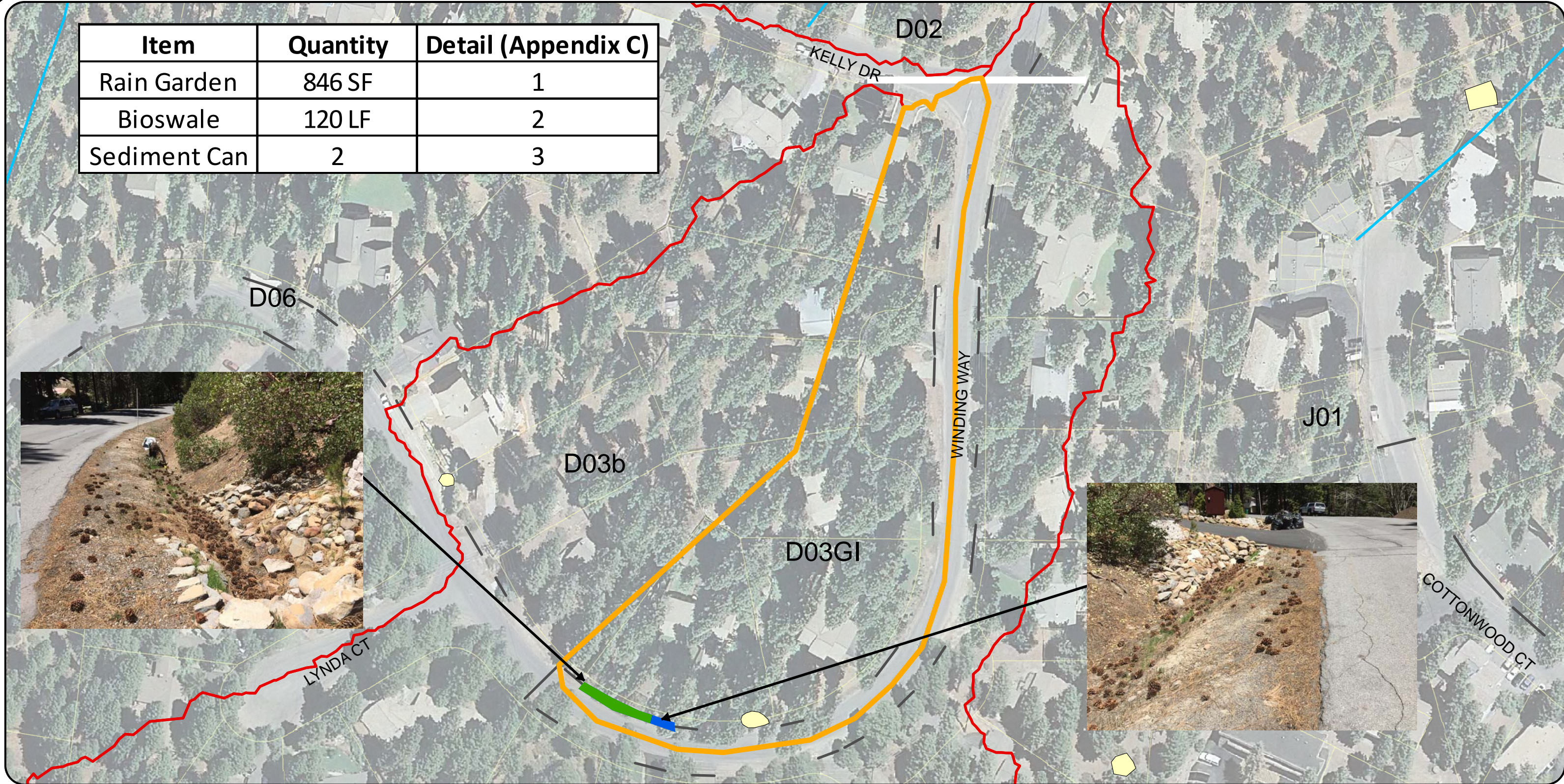
- CIVPh2 Stormwater Treatment
- Catchments
- Conveyance Pipe
- Schladow Depression Areas
- GI Catchments
- TRPA Parcels
- PLRM Basins
- Flow Path
- Curb Gutter
- Potential Basins

Incline Village Green Infrastructure Project



NV West State Plane	NAD 83	horiz. units: feet
Prepared by NTCD		May 2017

Item	Quantity	Detail (Appendix C)
Rain Garden	846 SF	1
Bioswale	120 LF	2
Sediment Can	2	3

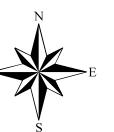


Potential Sites: Winding Way

- Schladow Depression Areas
- PLRM Basins
- Potential Basins
- Catchments
- GI Catchments
- FlowPath
- CurbGutter
- ConveyancePipe
- TRPA Parcels

Incline Village Green Infrastructure Project

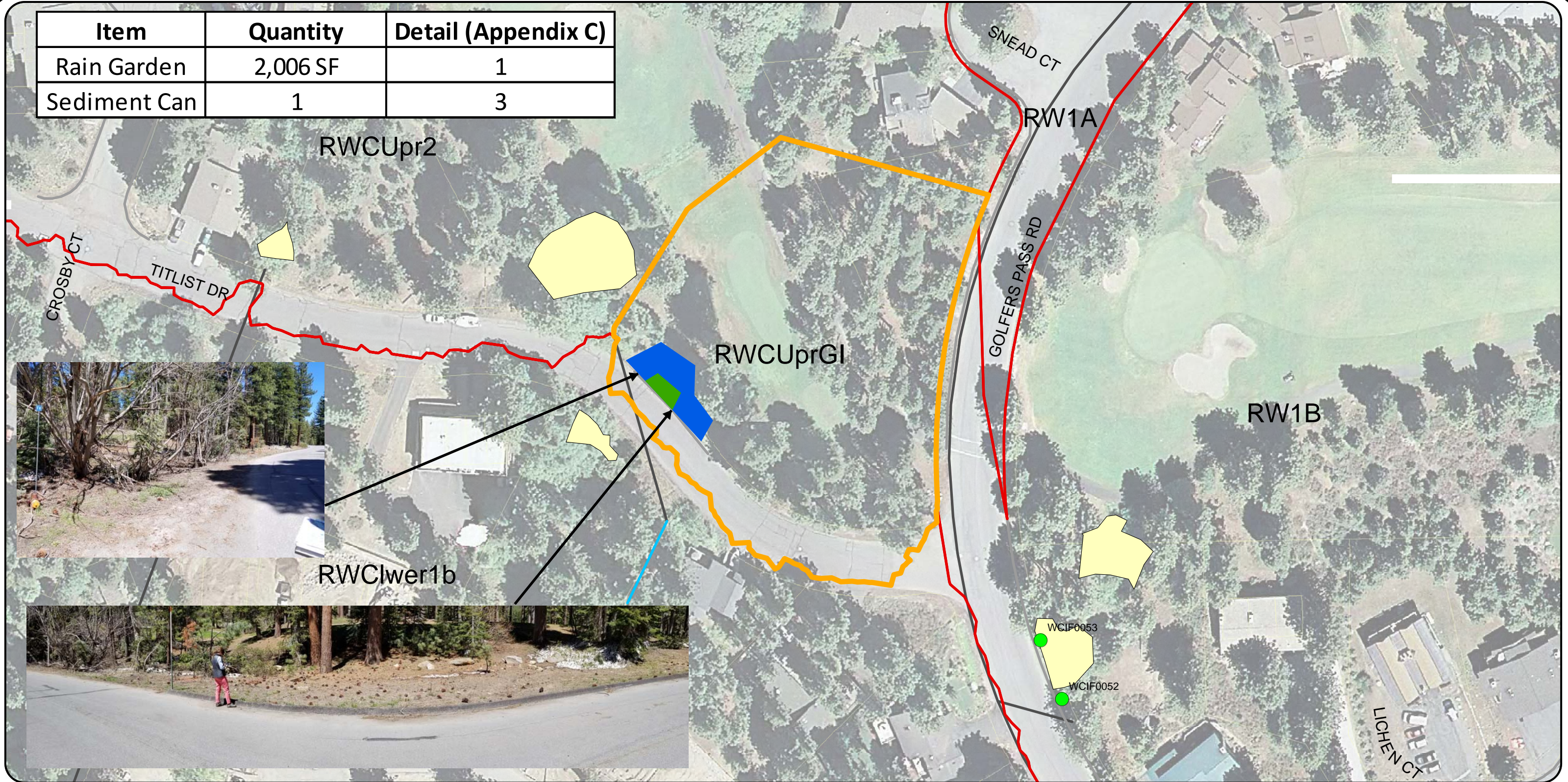
Scale - 1:1000



NV West State Plane NAD 83 horiz. units: feet

Prepared by NTCD May 2017

Item	Quantity	Detail (Appendix C)
Rain Garden	2,006 SF	1
Sediment Can	1	3



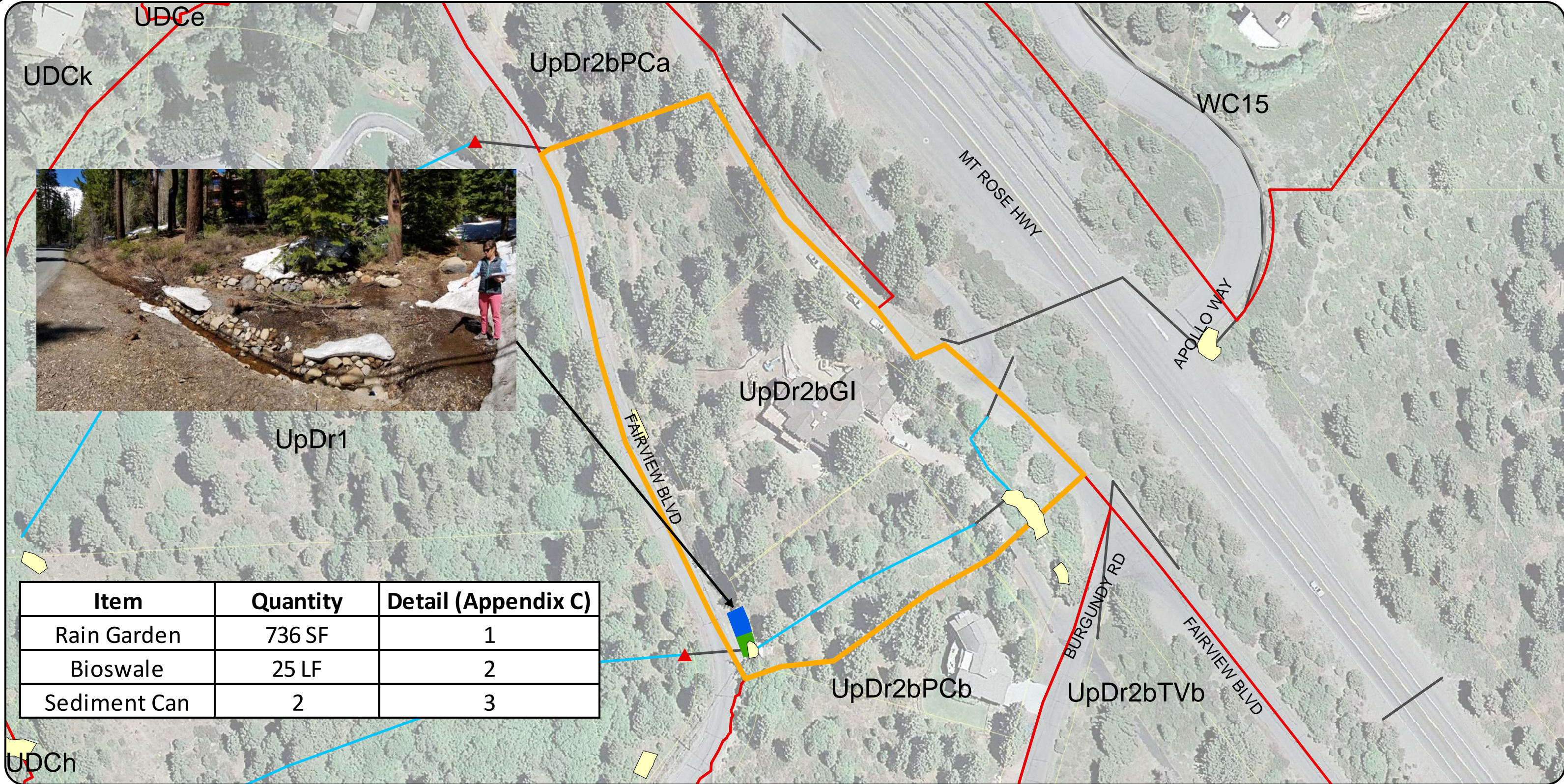
Potential Sites: Titlist Drive

- FF3 RWC Stormwater Treatment
- Schadow Depression Areas
- PLRM Basins
- Potential Basins
- Catchments
- GI Catchments
- TRPA Parcels
- FlowPath
- CurbGutter
- ConveyancePipe

Incline Village Green Infrastructure Project



NV West State Plane	NAD 83	horiz. units: feet
Prepared by NTCD		May 2017

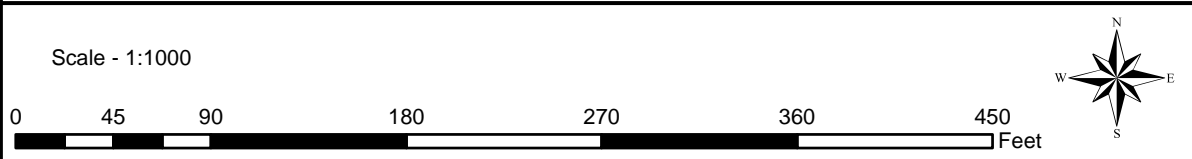


Item	Quantity	Detail (Appendix C)
Rain Garden	736 SF	1
Bioswale	25 LF	2
Sediment Can	2	3

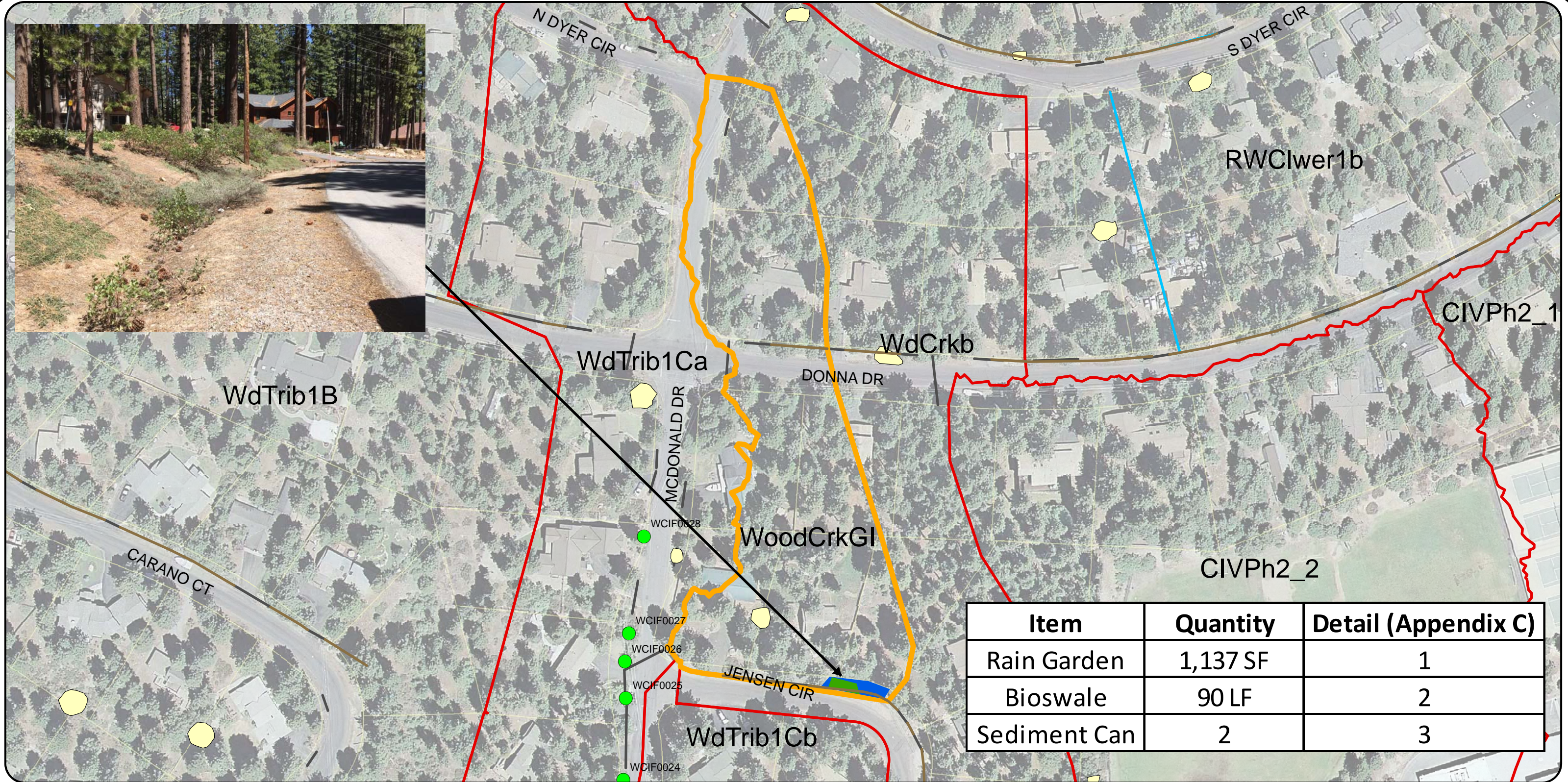
Potential Sites: Upper Fairview Boulevard

- Schladow Depression Areas
- PLRM Basins
- Potential Basins
- Catchments
- GI Catchments
- FlowPath
- CurbGutter
- ConveyancePipe
- TRPA Parcels

Incline Village Green Infrastructure Project



NV West State Plane	NAD 83	horiz. units: feet
Prepared by NTCD		May 2017



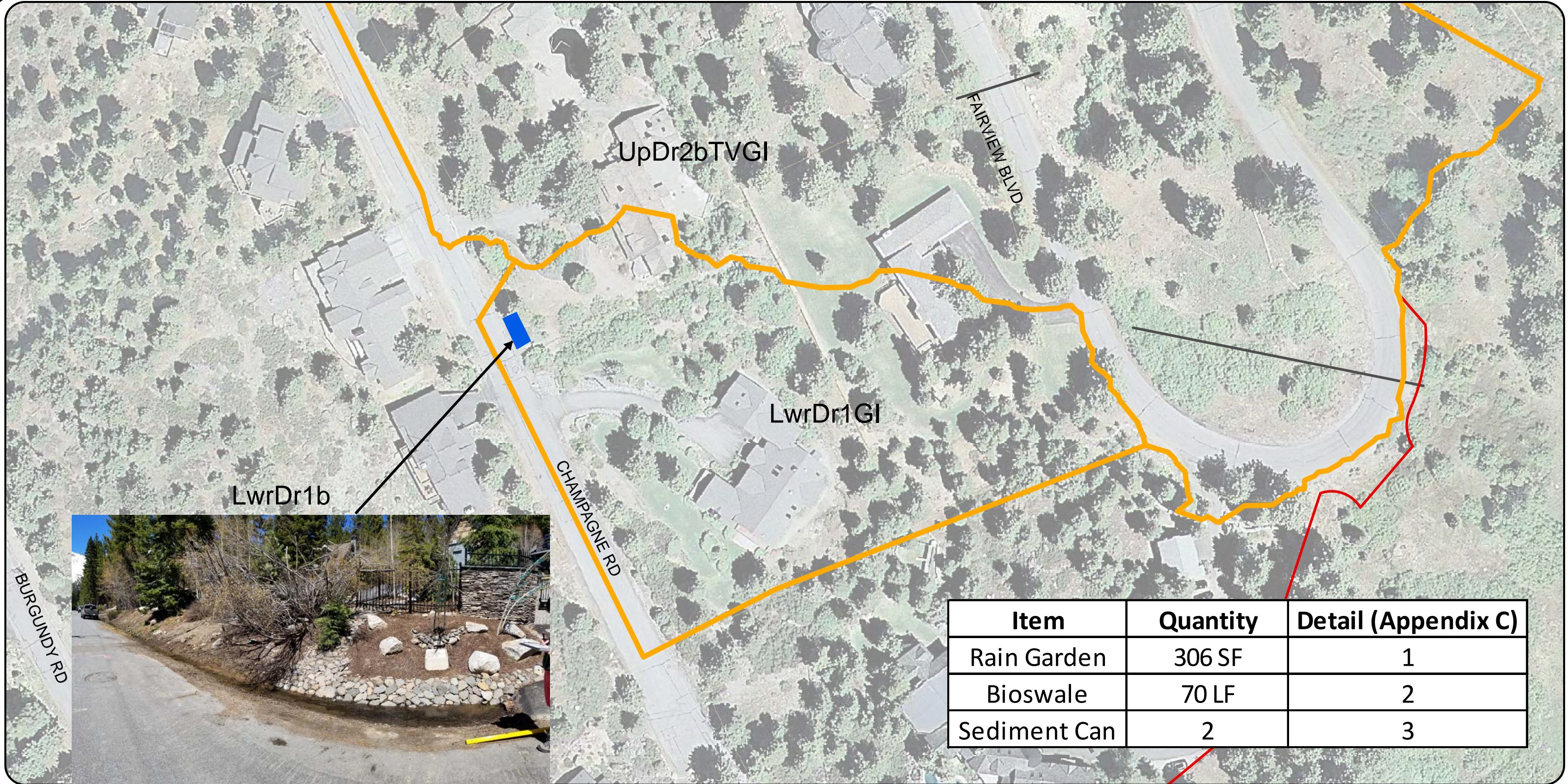
Item	Quantity	Detail (Appendix C)
Rain Garden	1,137 SF	1
Bioswale	90 LF	2
Sediment Can	2	3

Potential Sites: Jensen Circle

- CIVPh1 Stormwater Treatment
- Schladow Depression Areas
- PLRM Basins
- Potential Basins
- Catchments
- GI Catchments
- TRPA Parcels
- Conveyance Pipe
- Flow Path
- Curb Gutter

Incline Village Green Infrastructure Project



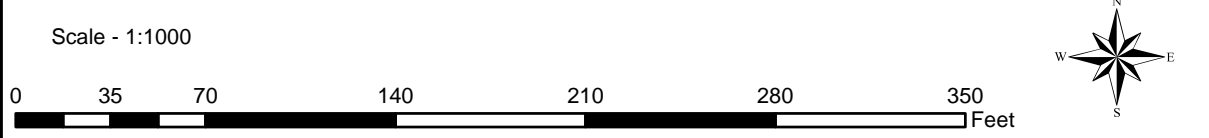


Item	Quantity	Detail (Appendix C)
Rain Garden	306 SF	1
Bioswale	70 LF	2
Sediment Can	2	3

Potential Sites: Champagne Road

- Schladow Depression Areas
- PLRM Basins
- Potential Basins
- Catchments
- GI Catchments
- FlowPath
- CurbGutter
- ConveyancePipe
- TRPA Parcels

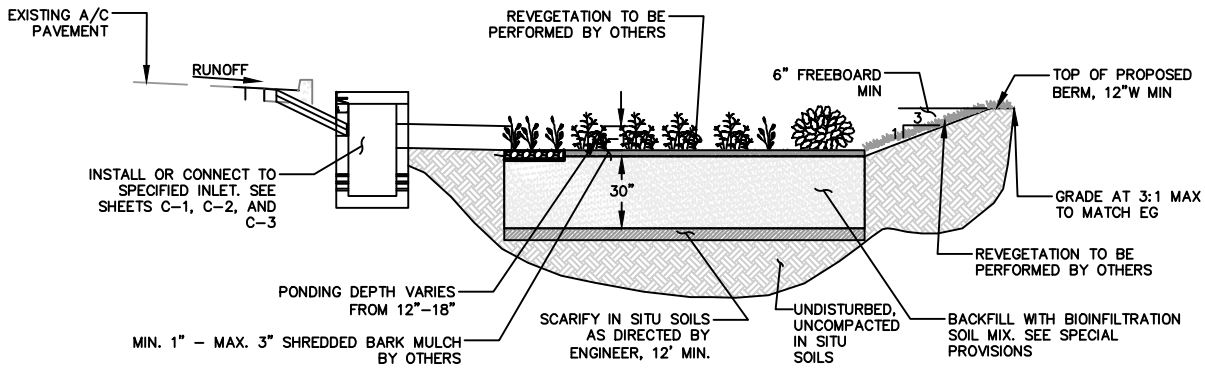
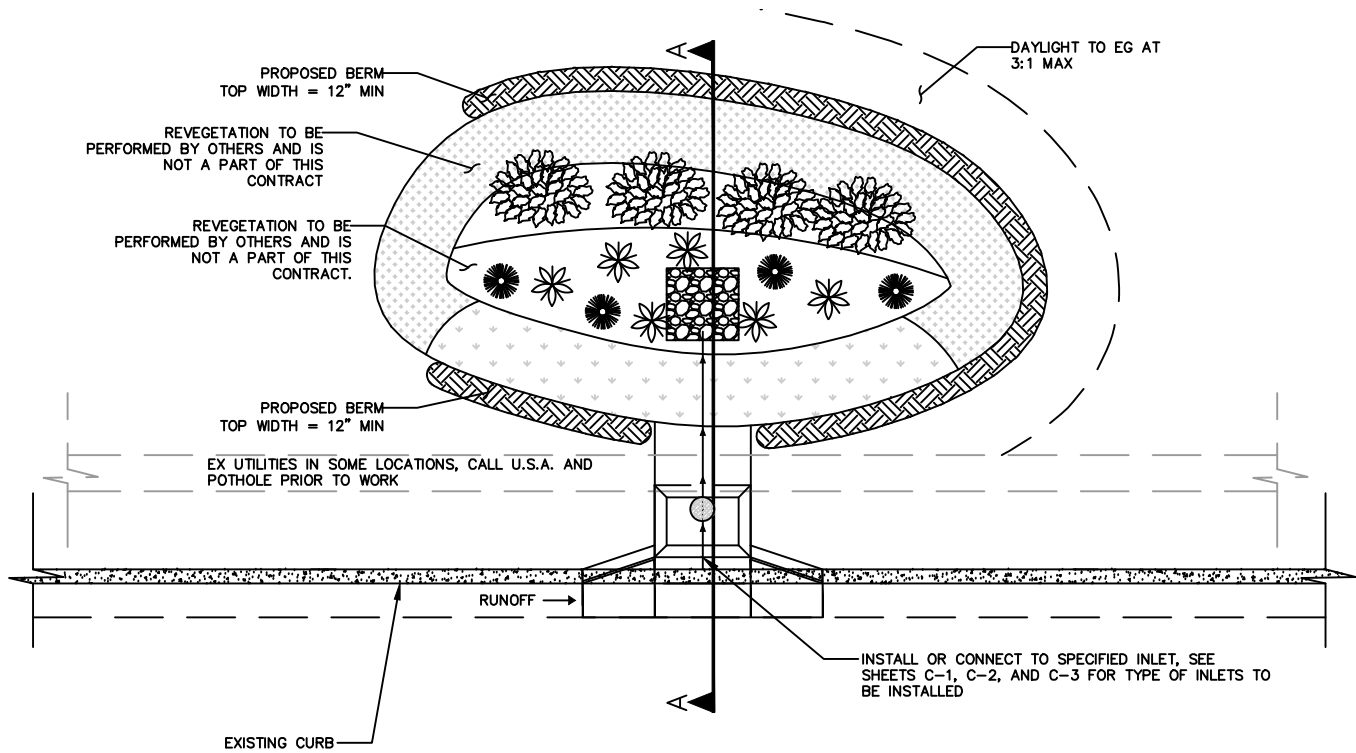
Incline Village Green Infrastructure Project



NV West State Plane	NAD 83	horiz. units: feet
Prepared by NTCD		May 2017

Appendix B: Green Infrastructure Basin Cost Estimate

				Item:	Revegetation:	Clearing and Grubbing	Basin Earthwork	12" Perforated pipe with gravel envelope	Utility conflict	Sediment Can	Pipe Retrofit of Sed Can	Remove Riprap	Drivable Grass	Turfstone	Riprap or Check Dam	Tree removal (or Large Stump)	Curb Cut	Pipe under Driveway	Temp BMPs	Mobilization and Traffic Control	Total
				Unit Cost:	\$2	\$1	\$40	\$120	\$500	\$3,500	\$1,000	\$2	\$12	\$12	\$10	\$400	\$500	\$80	5.00%	6.00%	
Name	Area (sf)	Assumed Basin Depth (in)	Volume (ft ³)	Unit:	SF	SF	CY	LF	EA	EA	EA	SF	SF	SF	SF	EA	EA	LF			
S Dyer Circle Basin	1,236	12	1236		\$2,472	\$1,236	\$1,831			\$3,500									\$451.96	\$542.35	\$10,033.41
Titlist Drive Basin	2,006	12	2,006		\$4,012	\$2,006	\$2,972			\$3,500							\$500		\$649.49	\$779.39	\$14,418.74
Jensen Circle Basin 1	1,137	12	1,137		\$2,274	\$1,137	\$1,684	\$10,800		\$7,000						\$400			\$1,164.77	\$1,397.73	\$25,857.94
Southwood Boulevard Basin 1	3,223	12	3,223		\$6,446	\$3,223	\$400	\$30,000		\$14,000	\$1,000		\$25,784			\$400			\$4,062.65	\$4,875.18	\$90,190.83
Southwood Boulevard Basin 2	2,435	12	2,435		\$4,870	\$2,435	\$3,607	\$6,000	\$500	\$7,000			\$19,480						\$2,194.62	\$2,633.54	\$48,720.57
Southwood Boulevard Basin 3	1,627	12	1,627		\$3,254		\$2,410		\$1,000	\$14,000	\$4,000	\$2,672							\$1,366.82	\$1,640.18	\$30,343.37
Southwood Boulevard Basin 4	1,336	12	1,336		\$2,672	\$1,336	\$1,979	\$18,000.00	\$1,000	\$7,000	\$2,000					\$2,800			\$1,839.36	\$2,207.24	\$40,833.86
Southwood Boulevard Basin 5	605	12	605		\$1,210		\$896		\$1,000	\$14,000	\$4,000	\$612				\$400			\$1,105.91	\$1,327.10	\$24,551.31
Champagne Road Basin	306	12	306		\$612	\$306	\$453	\$8,400	\$500	\$7,000									\$863.57	\$1,036.28	\$19,171.18
Burgundy Road Basin	900	12	900		\$1,800	\$900	\$1,333	\$10,800		\$7,000									\$1,091.67	\$1,310.00	\$24,235.00
Upper Fairview Boulevard Basin	726	12	726		\$1,452	\$726	\$1,076	\$3,000		\$7,000	\$1,000								\$712.68	\$855.21	\$15,821.45
1st Green Drive Basin	619	12	619		\$1,238	\$619	\$917							\$1,800		\$400			\$248.70	\$298.44	\$5,521.18
Eagle Drive Basin 1	3,180	12	3,180		\$6,360	\$3,180	\$4,711	\$16,800		\$3,500					\$200		\$500		\$1,762.56	\$2,115.07	\$39,128.73
Eagle Drive Basin 2 (On hold)	2,355	12	2,355		\$4,710	\$2,355	\$3,489	\$42,000	\$1,000	\$7,000									\$3,027.69	\$3,633.23	\$67,214.82
Winding Way Basin	846	12	846		\$1,692	\$846	\$1,253	\$14,400		\$7,000	\$1,000	\$50			\$600				\$1,342.07	\$1,610.48	\$29,793.88
Lakeshore Boulevard Basin 1	1,418	12	1,418		\$2,836	\$1,418	\$2,101		\$500	\$3,500								\$4,000	\$517.74	\$621.28	\$15,493.76
Lakeshore Boulevard Basin 2	1,577	12	1,577		\$3,154	\$1,577	\$2,336			\$3,500					\$1,000				\$578.36	\$694.04	\$12,839.70
Fairway Boulevard Basin 1	5,819	12	5,819		\$11,638	\$5,819	\$8,621	\$15,600	\$1,500	\$7,000									\$2,508.89	\$3,010.66	\$55,697.29
Fairway Boulevard Basin 2	651	12	651		\$1,302	\$651	\$964	\$6,000	\$500	\$7,000	\$1,000								\$870.87	\$1,045.05	\$19,333.36
Fairway Boulevard Basin 3	1,172	12	1,172		\$2,344	\$1,172	\$1,736		\$2,500	\$3,500	\$1,000				\$200				\$622.61	\$747.14	\$13,822.05
Freels Peak Drive Basin 1	551	12	551		\$1,102		\$816		\$500	\$3,500	\$1,000	\$1,102							\$401.01	\$481.22	\$8,902.53
Freels Peak Drive Basin 2	2,009	12	2,009		\$4,018	\$2,009	\$2,976	\$12,000		\$7,000		\$4,018			\$200				\$1,611.06	\$1,933.28	\$35,765.64
Preston Field Basin	4,154	12	4,154		\$8,308	\$4,154	\$6,154			\$3,500	\$1,000								\$1,155.80	\$1,386.96	\$25,658.84



SECTION A-A

APPENDIX C

RAIN GARDEN

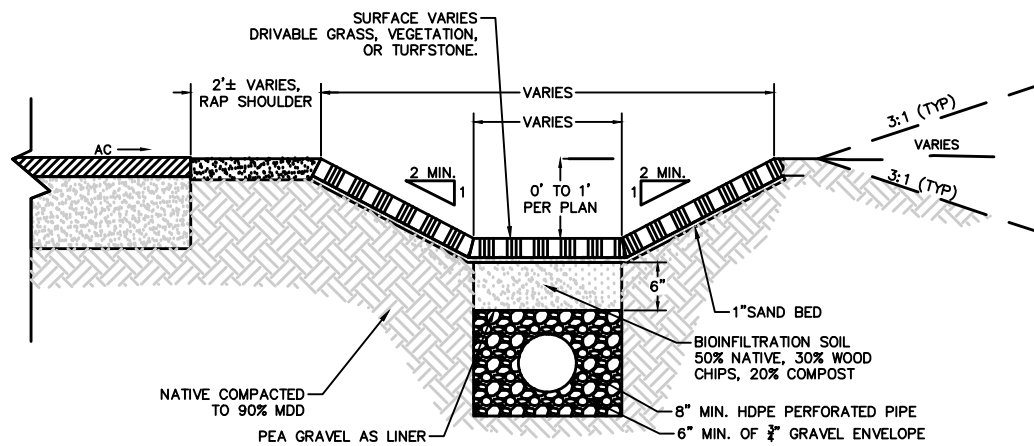
SCALE: N.T.S.



PROJECT
INCLINE VILLAGE GREEN
INFRASTRUCTURE PROJECT

1

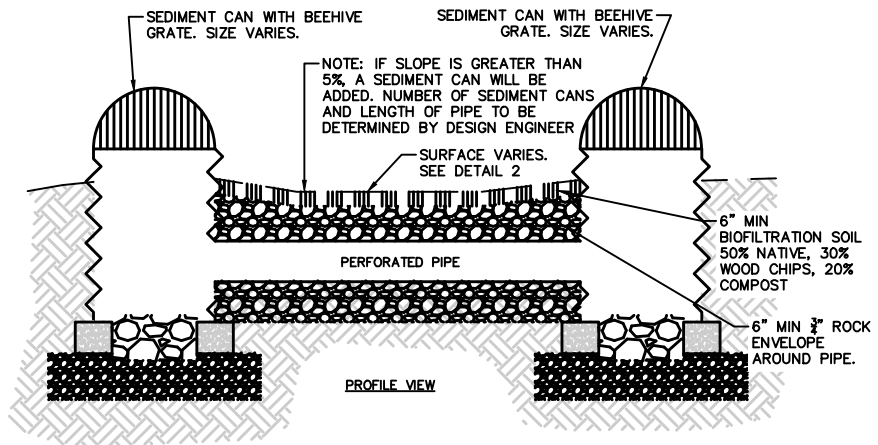
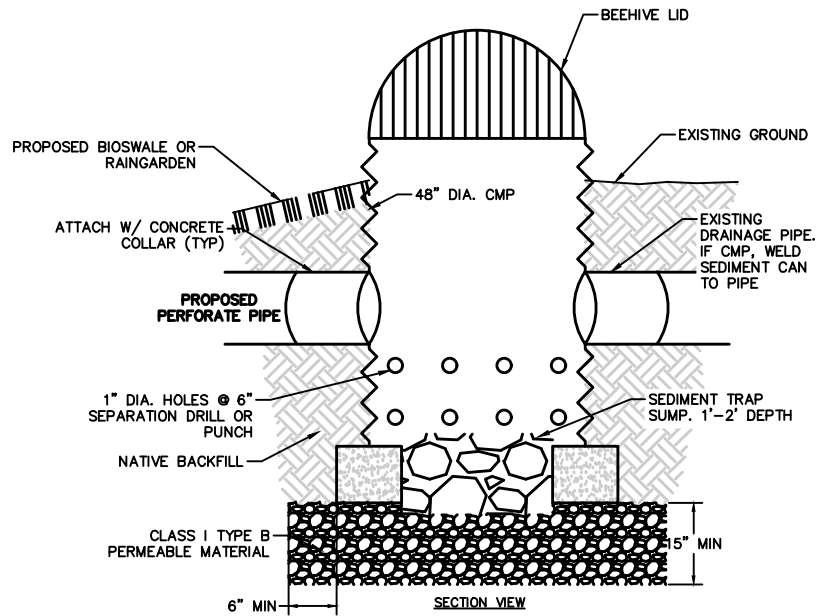
1 OF 4



APPENDIX C
BIO-SWALE WITH INFILTRATION
 SCALE: N.T.S.



PROJECT
 INCLINE VILLAGE GREEN
 INFRASTRUCTURE PROJECT



APPENDIX C

PERFORATED PIPE WITH SEDIMENT CANS

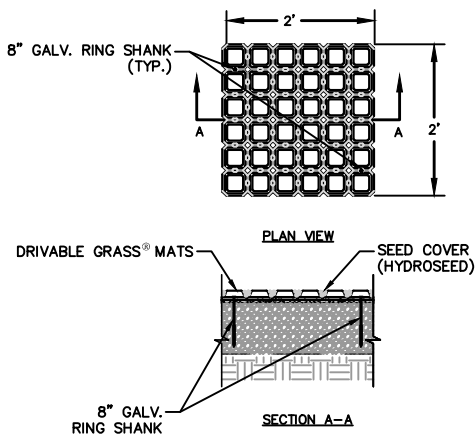
SCALE: N.T.S.



PROJECT
INCLINE VILLAGE GREEN
INFRASTRUCTURE PROJECT

3

3 OF 4



STAKING NOTE:
 USE FOUR (4) 8" GALV. RING SHANKS (1/4" GAUGE, 3/8" HEAD) PER DRIVABLE GRASS® MAT OR ANY CUT MATS. PLEASE CONSULT SOIL RETENTION, STAKING MAY VARY DEPENDING ON APPLICATION.



APPENDIX C
 TYPICAL PROFESSIONAL DRIVABLE GRASS®
 DETAIL - SOIL RETENTION
 SCALE: N.T.S.



PROJECT
 INCLINE VILLAGE GREEN
 INFRASTRUCTURE PROJECT

4

4 of 4